

Angling - Feeder Fishing

About Feeder Fishing

Feeder fishing is an alternative method of fishing to float fishing, and is a technique used for fishing in deep or fast flowing waters.

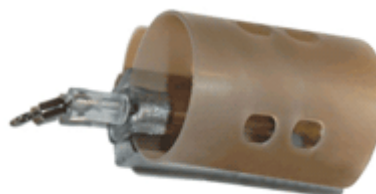
For this type of fishing, a feeder rod with inter-changeable quiver tips will be required. Where these quiver tips act as a bite indication.

Swimfeeders are containers of various designs that can be filled with bait. There are basically two types of swimfeeder that are suitable, these are the **block end** and **open end** types.

Block End



Open End



The **open end swimfeeder** can be used with ground bait, pellet, sweetcorn, maggots or a combination of these, and the **block end swimfeeder** is ideal for maggot and particle baits.

Most swimfeeders incorporate a weight loading of some sort, so that they can be cast to your chosen range, sink to the bottom and be held in place on the river or lake bed. The whole idea is that you cast accurately to the same spot again and again to form a “catching area”.

Swimfeeders can be very simply attached to the end of your line as illustrated in **Diagram A**. By using a swivel and hook length, the hook bait can be presented close to the feeder.

